

IWS75 31135
Q G 17ft 3M "75" Ra Re
30° 24.053' N
86° 45.397' W

Florida 120 Flip Charts

These 12 charts cover the route of the FL120. You can view them here (click to enlarge) or download them in PDF format by clicking the "Download Charts" link in the sidebar on the left side of this page.

The charts are annotated with information about a few navaid along the route, each night's destination and some enroute points where food, water, supplies, restrooms and showers can be found.

Navaid Legend:

1st line: My GPS waypoint name and the Light List ID number of the navaid
The waypoint name are initials denoting location and the mark number

- IPB - ICW Pensacola Bay
- IPM - ICW Pensacola to Mobile
- ISD - ICW Santa Rosa Sound to Dauphin Island
- ISR - ICW Santa Rosa Sound
- IWS - ICW West Bay to Santa Rosa Island
- PBE - Pensacola Bay Entrance
- PBS - Pensacola Bay South

2nd line: Chart description of navaid
3rd line: Latitude
4th line: Longitude

Two notes about the rest stops / supply stops:

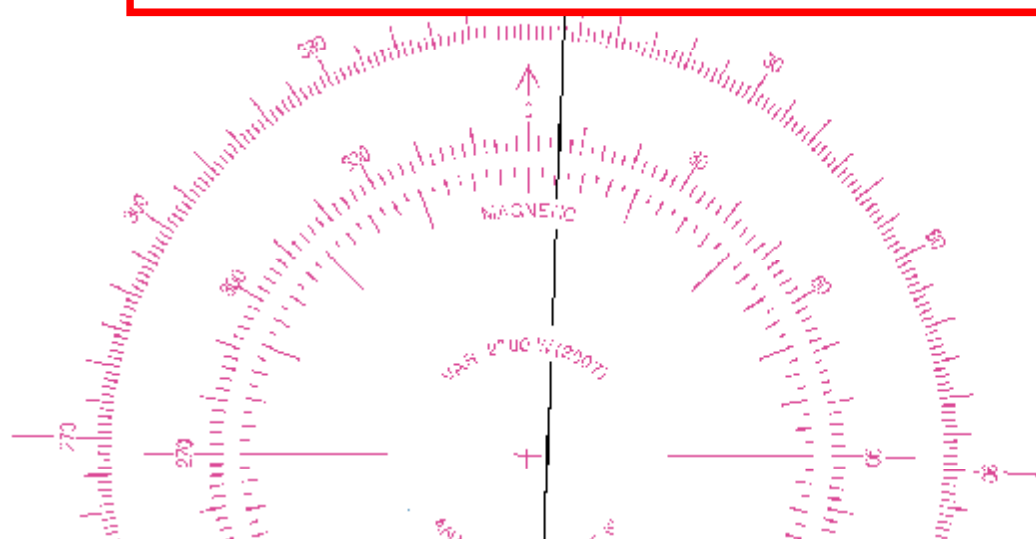
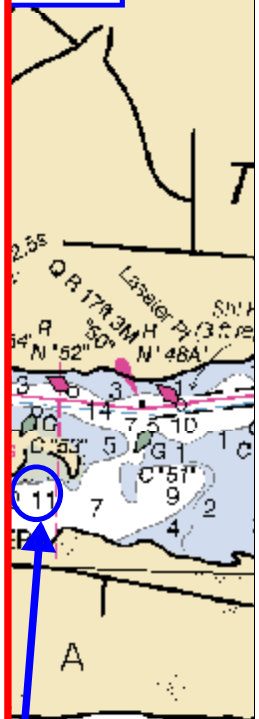
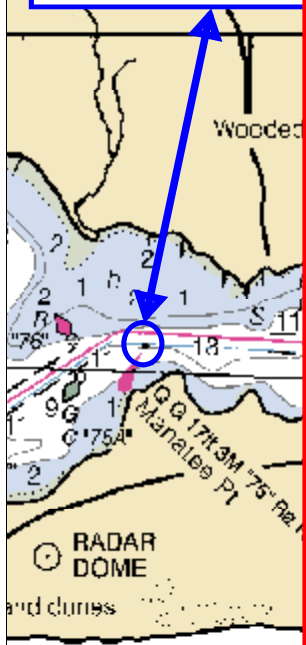
1. Quietwater area - boats with any significant draft or that aren't very maneuverable should not try to beach at Surf Burger or Circle K. The water to the beach is very shallow and there are tight quarters between the swimming areas, pilings, etc. You'll be better off docking at the Quietwater dock. Surf Burger and Circle K are an easy walk from the dock.
2. The beach pavilion between Quietwater and Juana's is the only point I could find but should probably only be considered in near emergencies or abject boredom. It is quite a trek across soft sand and underbrush. Be sure to wear shoes. It's probably only for the adventurous souls (and soles) or for those who really, really want a cold shower.

31030

2' N
6' W

11

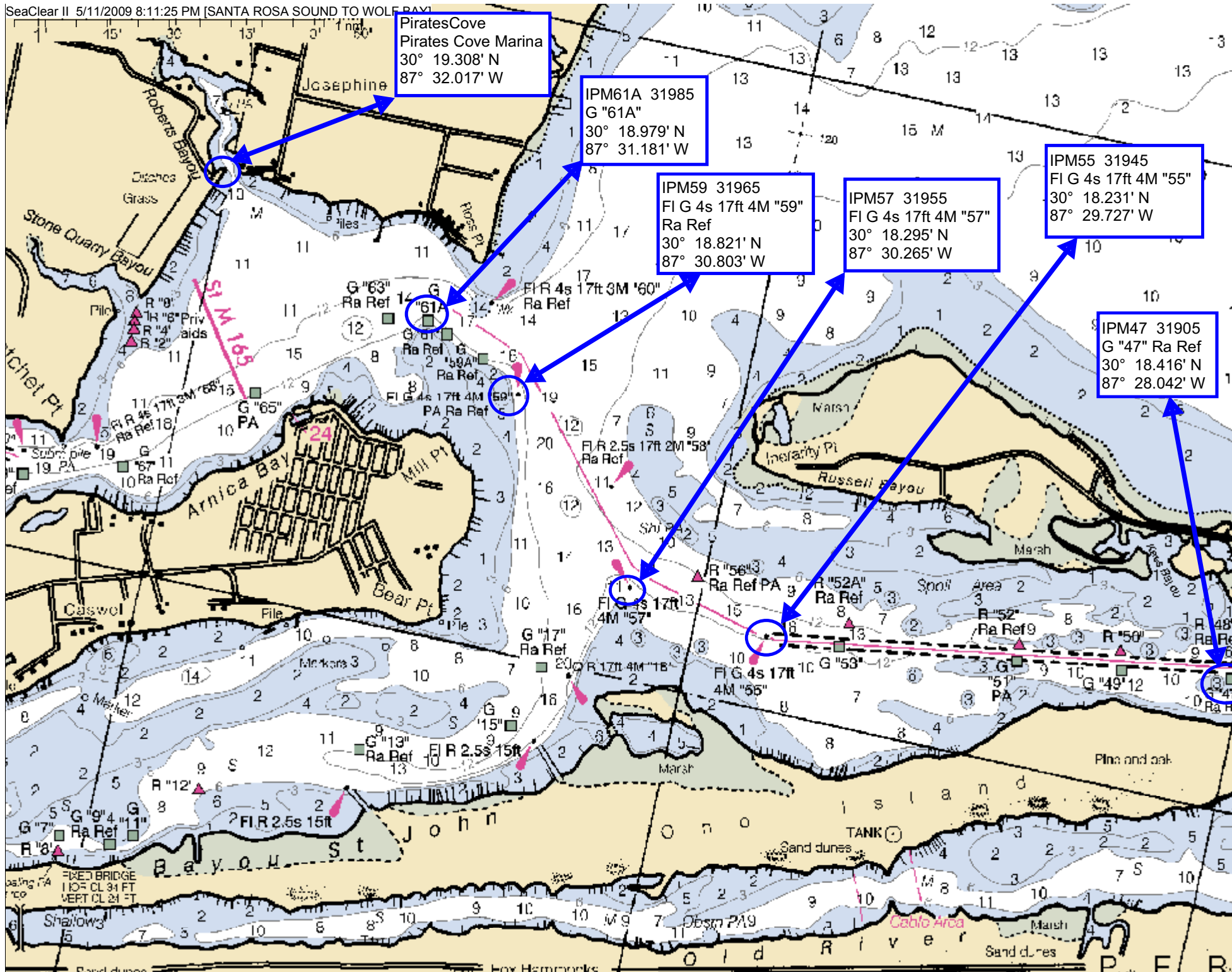
Sceptre Island So Side
30° 24.192' N
86° 41.838' W

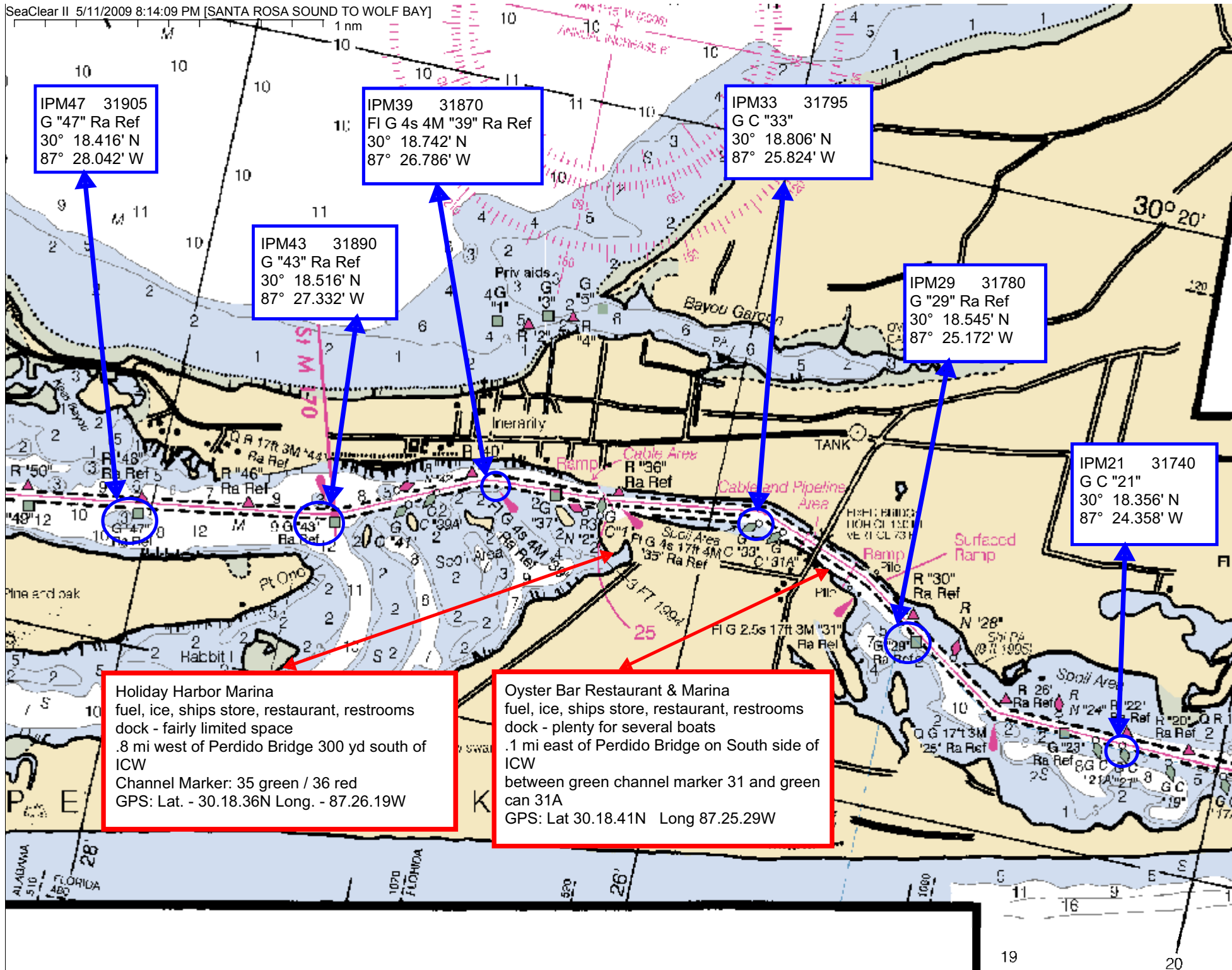


G U

RACI
Racing buoys are not shown here obtained from the L Offices as racing are not all listed in the J.

The prudent mariner will refer to navigation, particularly Guard Light List and U.S.





IPM47 31905
G "47" Ra Ref
30° 18.416' N
87° 28.042' W

IPM39 31870
Fl G 4s 4M "39" Ra Ref
30° 18.742' N
87° 26.786' W

IPM33 31795
G C "33"
30° 18.806' N
87° 25.824' W

IPM43 31890
G "43" Ra Ref
30° 18.516' N
87° 27.332' W

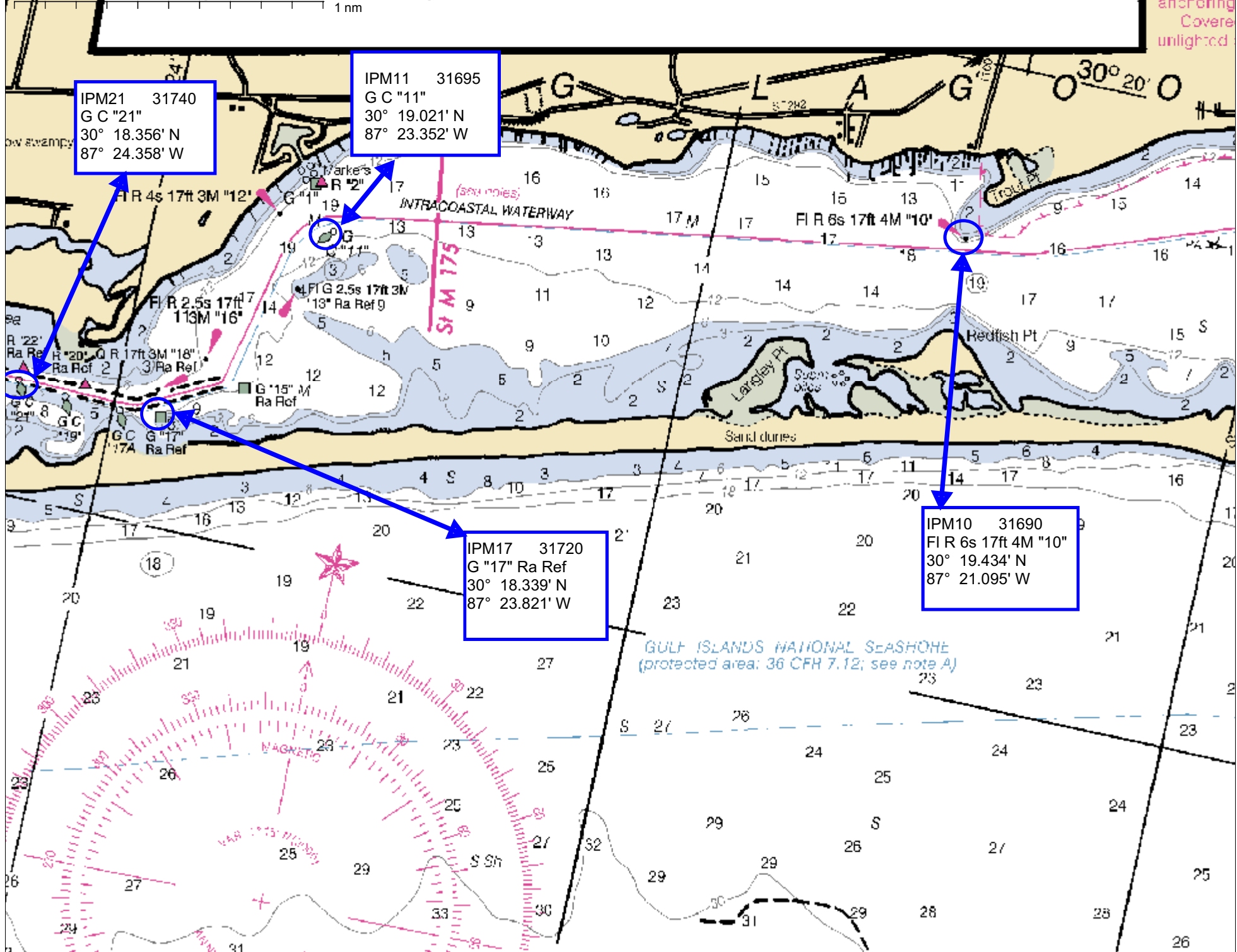
IPM29 31780
G "29" Ra Ref
30° 18.545' N
87° 25.172' W

IPM21 31740
G C "21"
30° 18.356' N
87° 24.358' W

Holiday Harbor Marina
fuel, ice, ships store, restaurant, restrooms
dock - fairly limited space
.8 mi west of Perdido Bridge 300 yd south of ICW
Channel Marker: 35 green / 36 red
GPS: Lat. - 30.18.36N Long. - 87.26.19W

Oyster Bar Restaurant & Marina
fuel, ice, ships store, restaurant, restrooms
dock - plenty for several boats
.1 mi east of Perdido Bridge on South side of ICW
between green channel marker 31 and green can 31A
GPS: Lat 30.18.41N Long 87.25.29W

Proposed
anchoring
Covered
unlighted



are required to be dined, and
... originally buried may have
... operating vessels in depths of
... able to their draft in areas where
... cables may exist, and when
... tagging or drawing.

IPM7 31685
FI G 2.5s 17ft 3M "7"
30° 19.804' N
87° 19.58' W

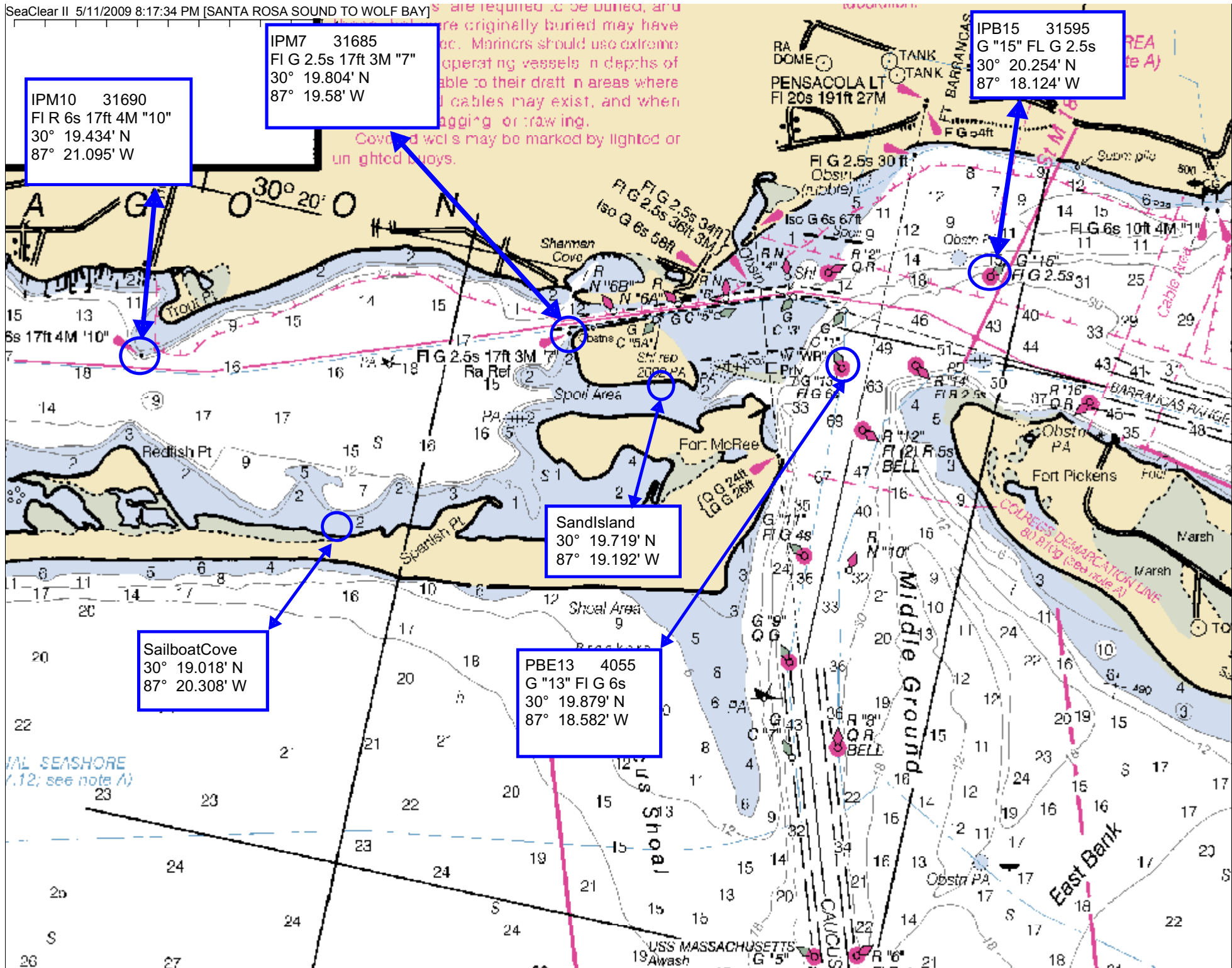
IPM10 31690
FI R 6s 17ft 4M "10"
30° 19.434' N
87° 21.095' W

IPB15 31595
G "15" FL G 2.5s
30° 20.254' N
87° 18.124' W

SandIsland
30° 19.719' N
87° 19.192' W

SailboatCove
30° 19.018' N
87° 20.308' W

PBE13 4055
G "13" FI G 6s
30° 19.879' N
87° 18.582' W



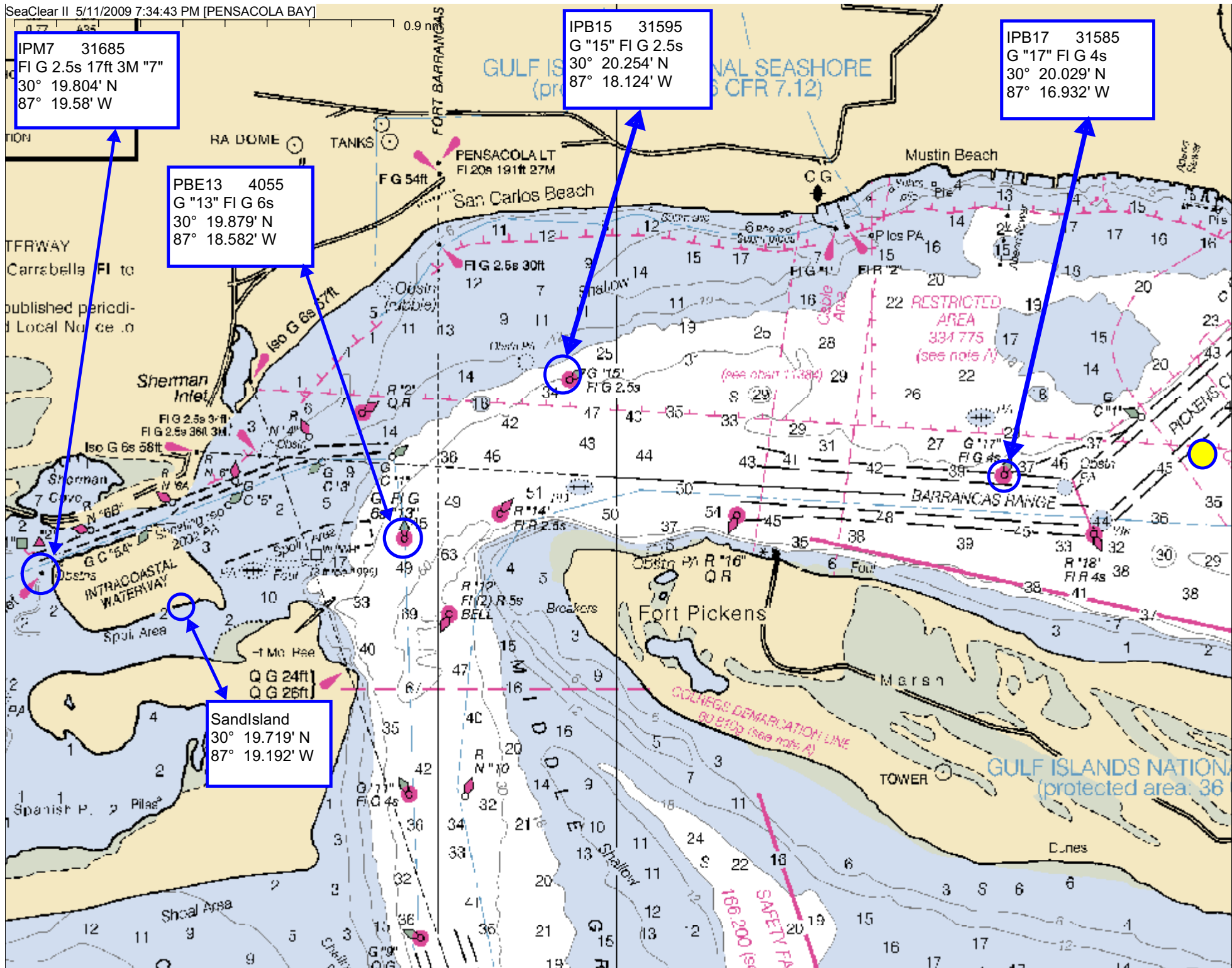
IPM7 31685
FI G 2.5s 17ft 3M "7"
30° 19.804' N
87° 19.58' W

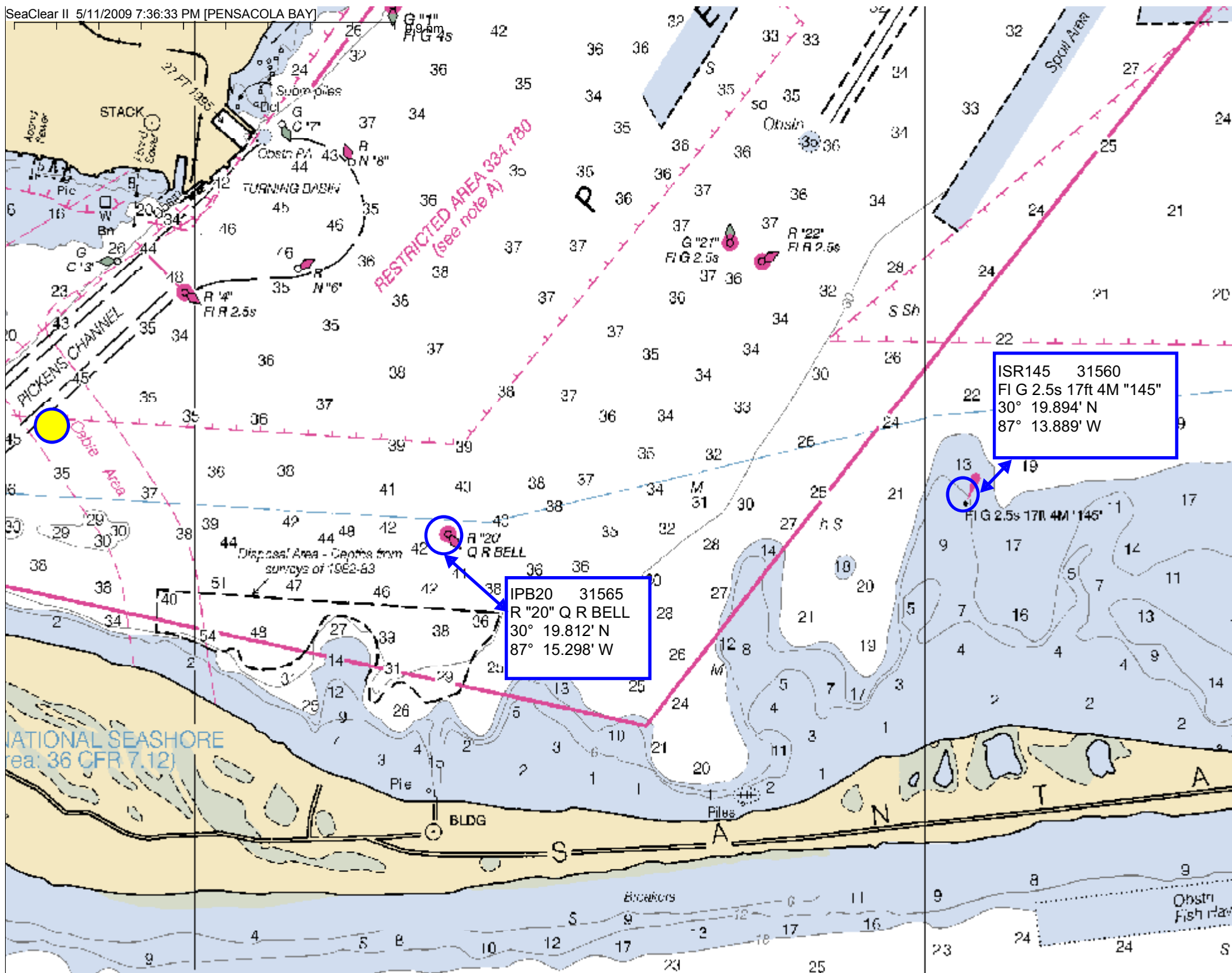
PBE13 4055
G "13" FI G 6s
30° 19.879' N
87° 18.582' W

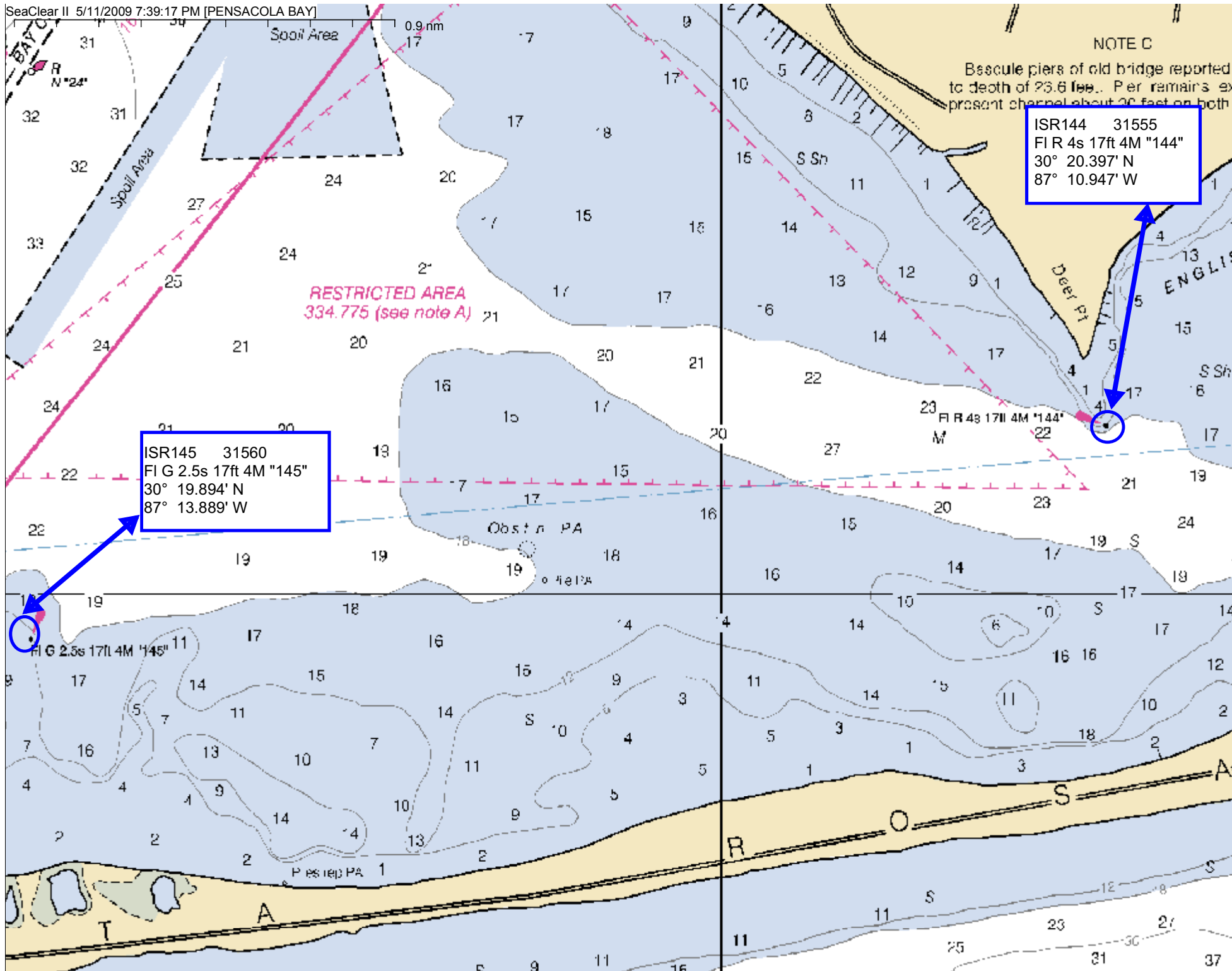
IPB15 31595
G "15" FI G 2.5s
30° 20.254' N
87° 18.124' W

IPB17 31585
G "17" FI G 4s
30° 20.029' N
87° 16.932' W

SandIsland
30° 19.719' N
87° 19.192' W

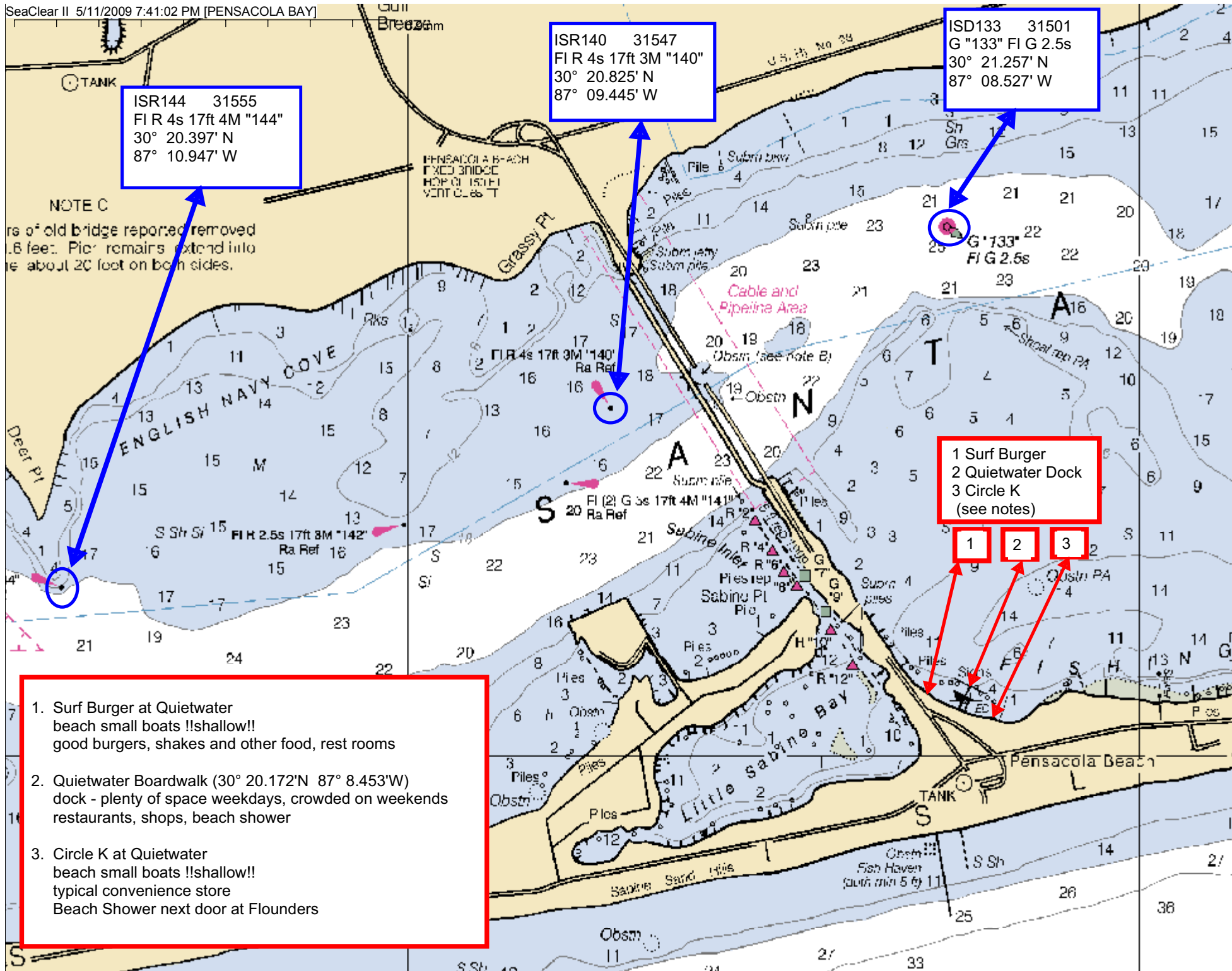






ISR145 31560
Fl G 2.5s 17ft 4M "145"
30° 19.894' N
87° 13.889' W

ISR144 31555
Fl R 4s 17ft 4M "144"
30° 20.397' N
87° 10.947' W



ISR144 31555
 FI R 4s 17ft 4M "144"
 30° 20.397' N
 87° 10.947' W

ISR140 31547
 FI R 4s 17ft 3M "140"
 30° 20.825' N
 87° 09.445' W

ISD133 31501
 G "133" FI G 2.5s
 30° 21.257' N
 87° 08.527' W

1 Surf Burger
 2 Quietwater Dock
 3 Circle K
 (see notes)

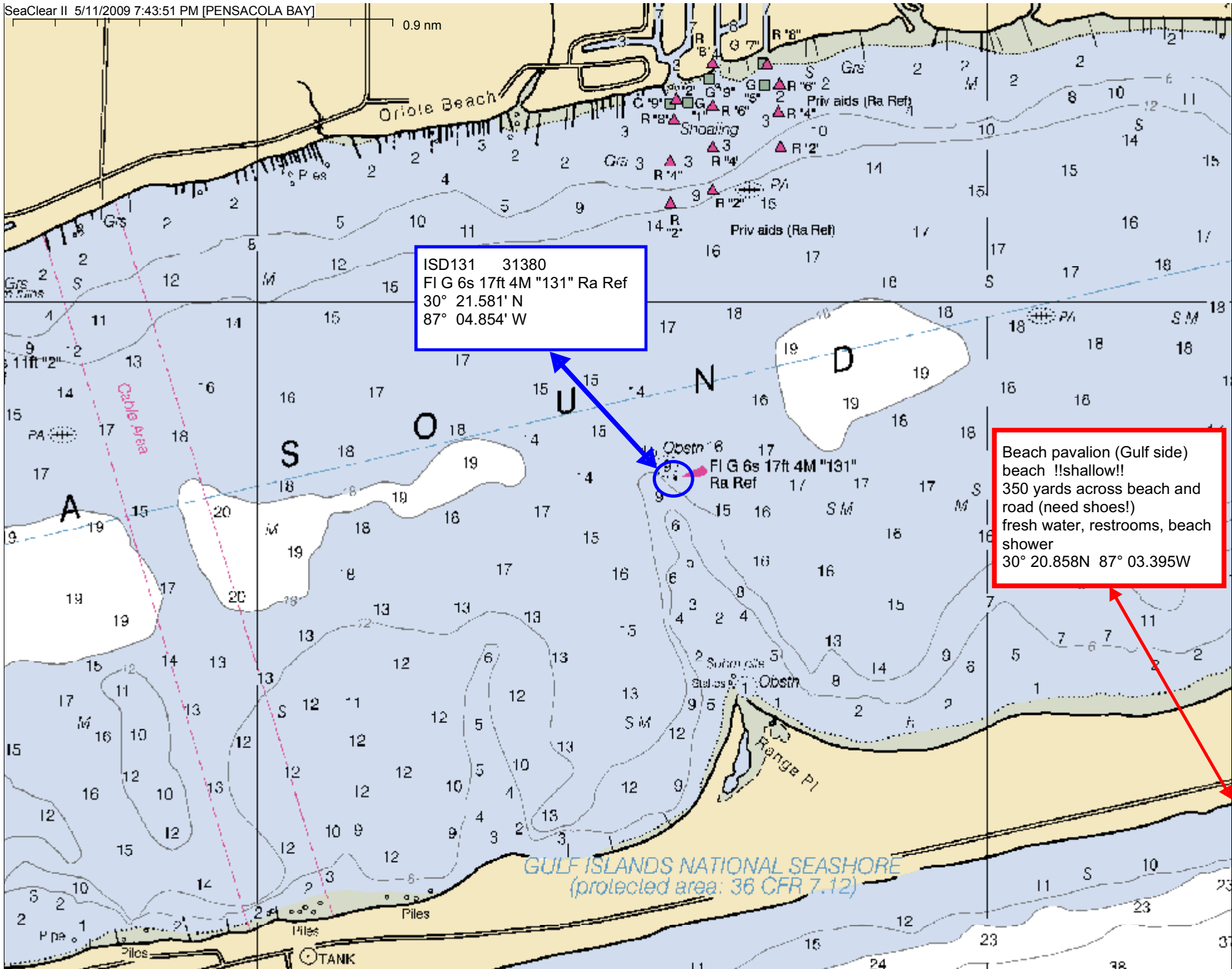
1. Surf Burger at Quietwater beach small boats !!shallow!! good burgers, shakes and other food, rest rooms

2. Quietwater Boardwalk (30° 20.172'N 87° 8.453'W) dock - plenty of space weekdays, crowded on weekends restaurants, shops, beach shower

3. Circle K at Quietwater beach small boats !!shallow!! typical convenience store Beach Shower next door at Flounders

NOTE C
 rs of old bridge reported removed
 .6 feet. Pier remains extend into
 e about 20 foot on both sides.

0.9 nm



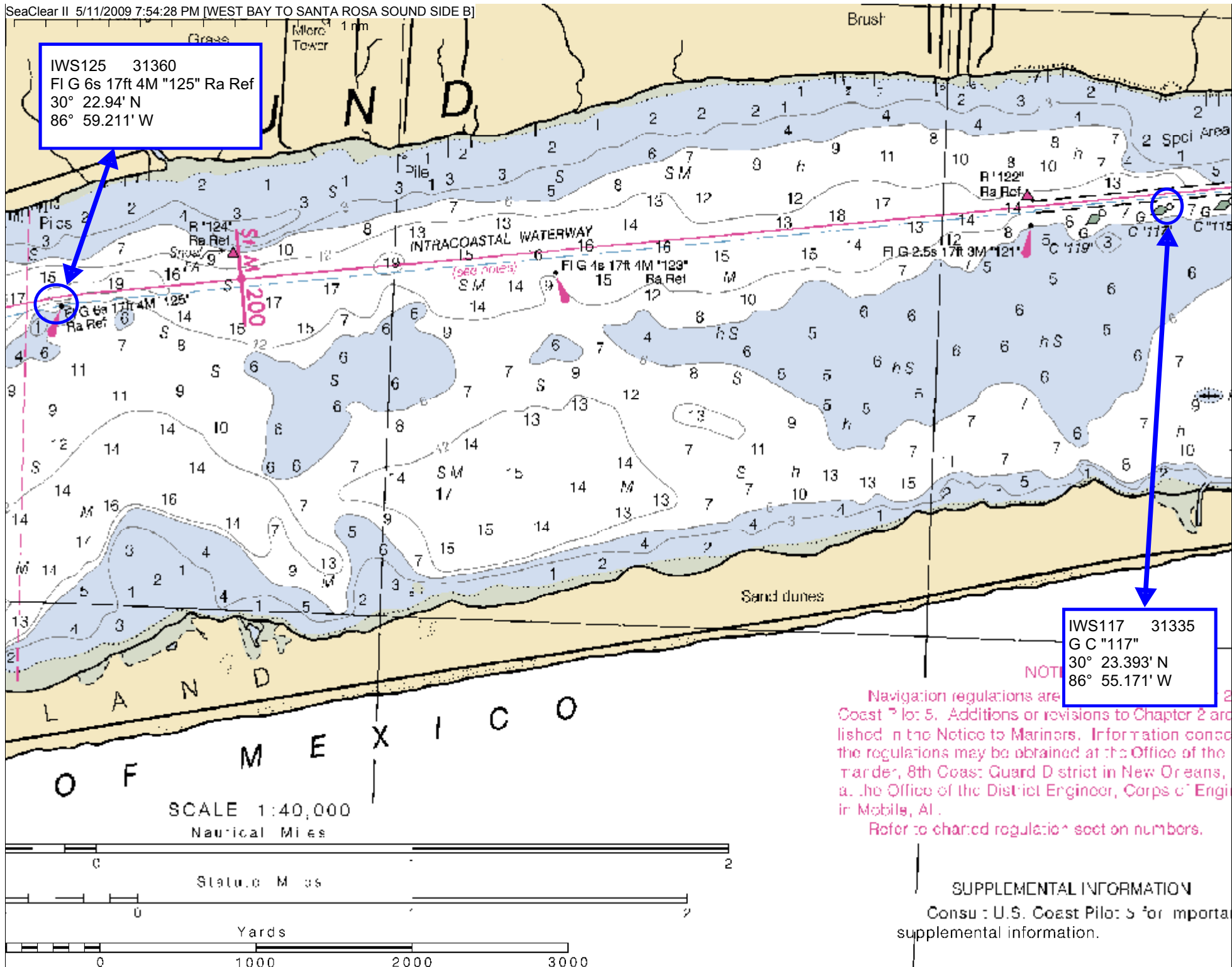
ISD131 31380
 FI G 6s 17ft 4M "131" Ra Ref
 30° 21.581' N
 87° 04.854' W

Beach pavilion (Gulf side)
 beach !!shallow!!
 350 yards across beach and
 road (need shoes!)
 fresh water, restrooms, beach
 shower
 30° 20.858N 87° 03.395W

GULF ISLANDS NATIONAL SEASHORE
 (protected area: 36 CFR 7.12)

TANK

IWS125 31360
FIG 6s 17ft 4M "125" Ra Ref
30° 22.94' N
86° 59.211' W



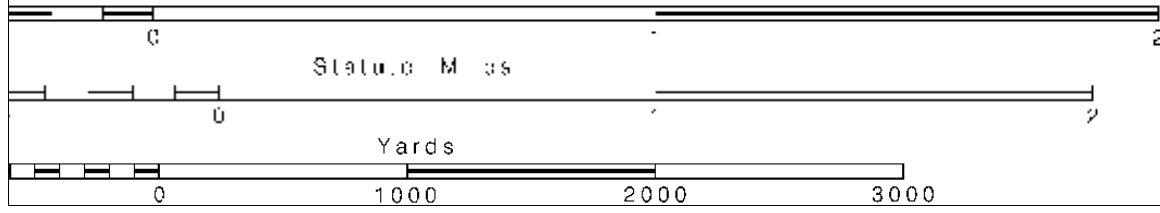
IWS117 31335
GC "117"
30° 23.393' N
86° 55.171' W

NOTICE
Navigation regulations are...
Coast Pilot 5. Additions or revisions to Chapter 2 are...
published in the Notice to Mariners. Information concerning...
the regulations may be obtained at the Office of the...
Commander, 8th Coast Guard District in New Orleans...
or the Office of the District Engineer, Corps of Engineers...
in Mobile, AL.
Refer to charted regulation section numbers.

SUPPLEMENTAL INFORMATION

Consult U.S. Coast Pilot 5 for important supplemental information.

SCALE 1:40,000
Nautical Miles



IWS111 31310
G C "111"
30° 23.474' N
86° 54.474' W

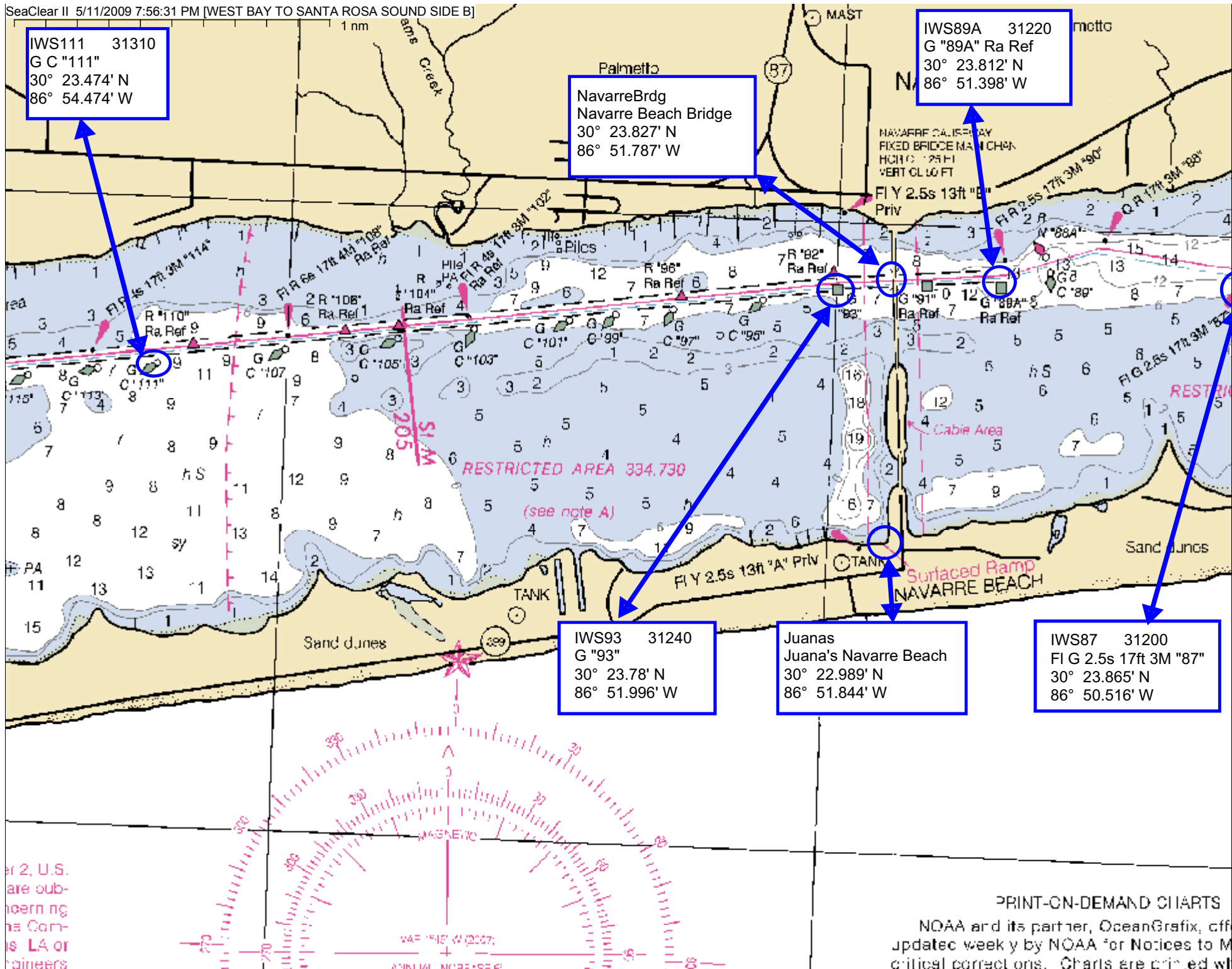
Palmetto
NavarreBrdg
Navarre Beach Bridge
30° 23.827' N
86° 51.787' W

IWS89A 31220
G "89A" Ra Ref
30° 23.812' N
86° 51.398' W

IWS93 31240
G "93"
30° 23.78' N
86° 51.996' W

Juanas
Juana's Navarre Beach
30° 22.989' N
86° 51.844' W

IWS87 31200
FI G 2.5s 17ft 3M "87"
30° 23.865' N
86° 50.516' W



er 2, U.S.
are out-
cern ng
as Cor-
is LA of
ainers

PRINT-ON-DEMAND CHARTS

NOAA and its partner, OceanGrafix, off-
updatec week y by NOAA for Notices to M
critical correctons. Charts are printed w/